

"LAY VESSEL 108"

PIPE-LAYING/OFFSHORE CONSTRUCTION VESSEL



PRINCIPAL PARTICULARS

Length overall	132.44 m
Length between p.p.	120.40 m
Breadth moulded	27.00 m
Depth main deck	9.70 m
Depth tween deck	6.20 m
Max. Draft	6.85 m
Gross tonnage	10830

CAPACITIES

Deck Area	1750 m ²
Fuel-Oil	1900 m ³
Fresh Water	860 m ³
Ballast Water	6200 m ³

CLASS

Det Norske Veritas +IA1, HELDK, DYNPOS-AUTR, DK(+), EO, CLEAN, COMF(V3), NAUT.OSV(A)

ACCOMMODATION

Total number of crew 129 persons

EQUIPMENT FOR CARGO

DECK CRANE (1)
Make: NOV AHC OC4500BSCE
Max. Lifting capacity 400t at 15 m

DECK CRANE (1)
Make: NOV AHC Knuckle Boom
Max. Lifting capacity 100t at 16 m

PROVISION CRANE (2)

Make: TTS - Type GP-80-2-12
Max. Lifting capacity 2t at 12 m

DECK MACHINERY

ANCHOR MOORING WINCH (2) Electro-hydraulic
Make: Ibercisa MAN-H/H/62/28 t

CAPSTAN (4) Electro-Hydraulic
Make: Ibercisa CH/30/10-15/10 t

MANOEUVRING SYSTEM

AZIMUTH THRUSTER (2)
Make: Rolls-Royce - Type AZP-120
Power 3500 kW
Motor Make Alconza
Propeller Diam 3000 mm

TUNNEL THRUSTER (2)
Make: Rolls-Royce - Type TT-2400
Power 1500 kW
Motor Make Alconza
Propeller diam 2400 mm

SWING THRUSTER (1)
Make: Rolls-Royce - Type TCNS-92/62
Power 1500 kW
Motor Make Alconza
Propeller diam 2400 mm

DYNAMIC POSITIONING SYSTEM

Make: Kongsberg Simrad - Type DPC21

DIESEL ELECTRIC PROPULSION SYSTEMS

ENGINES (4+1)

Make: Wärtsilä - Type 7L32(4)
Power 3360 kW at 720 rpm

GENERATOR (4)
Make: Alconza - Type NIR 7185 A-10LW
Power 3589 kVA 690V/60Hz

Make: Wärtsilä - Type 8L26 (1)
Power 2600 kW at 900 rpm

GENERATOR (1)
Make: Alconza - Type NIR 6388 A-BLW
Power 2772 kVA 690V/60Hz

HARBOUR/EMERGENCY GENERATOR

ENGINE (1)
Make: Caterpillar - Type C-32
Power 994 kW at 1800 rpm

GENERATOR (1)
Make: Stamford - Type HCM 634K
Power 1347 kVA 690V/60Hz

MACHINERY SYSTEMS

PUMPS
Make Azcue

BILGE WATER SEPARATOR
Make: Facel - Type CPS-10B-2.5

STARTING AIR COMPRESSOR (2)
Make: Sperre - Type HL2/160

SERVICE AIR COMPRESSOR (2)
Make: Tamrotor - Type TMC-65.9
Capacity 8.27 m³

LUB-OIL SEPARATOR (2)
Make: Alfa Laval - Type PU-150

FUEL OIL SEPARATOR (2)
Make: Alfa Laval - Type PU-150

FRESH WATER GENERATORS (2)
Make: Aquamar - Type AQ-25/2
Capacity 25 / day each

INCINERATOR (1)
Make: Detegasa - Type DELTA IRLA-65
Capacity 650000 Kcal/h

ANTI-HELLING SYSTEM (1)
Make: Framo - Type RBP 300.3
Flow 1000 m³/h

TANK SOUNDING SYSTEM
Make Ariston-Norway

SHIP'S SYSTEM

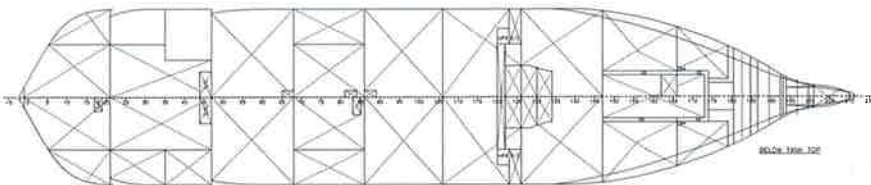
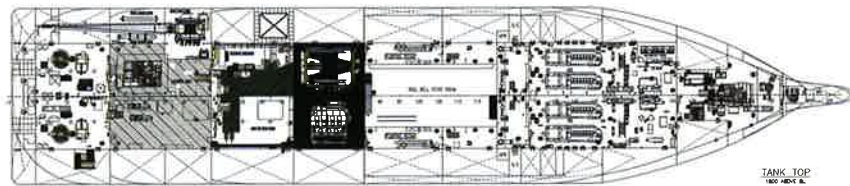
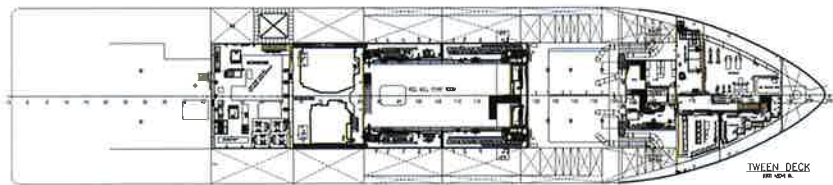
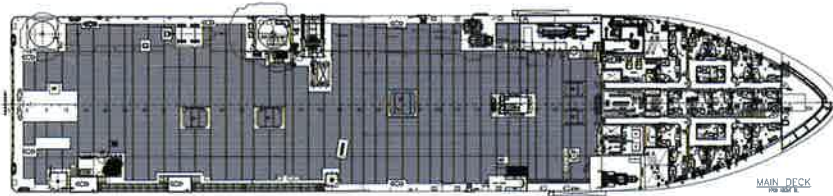
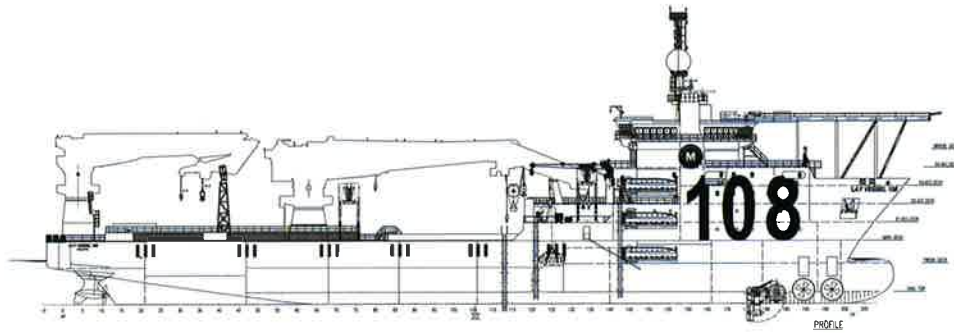
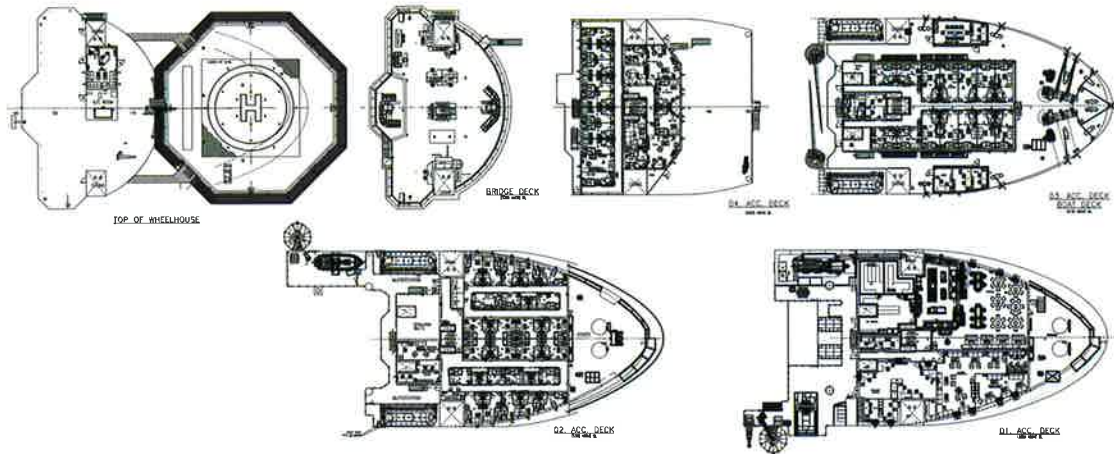
Automation system Wärtsilä Automation
Electric installation company Isolux
Ventilation/Air conditioning system Novenco
Accommodation Regenasa



MetalSHIPS
& DOCKS, S.A.U.

"LAY VESSEL 108"

PIPE-LAYING/OFFSHORE CONSTRUCTION VESSEL



PRINCIPAL PARTICULARS

LENGTH OVER ALL:	132,44 M
LOA WITH HELDECK:	135,65 M
LENGTH BETWEEN PERP.:	120,40 M
BREADTH MOULDED:	27,00 M
DEPTH MAIN DECK:	9,70 M
MAX DRAFT:	6,85 M
FRAME SPACING:	0,60 M
ACCOMODATION FOR 129 PERS:	
15 x 1 MAN CABINS	
57 x 2 MAN CABINS	

[IMO 9673600]



Project Name	Client	Project No.	Revision
GENERAL ARRANGEMENT	1250	03	08.09.12
SAW 2022-II			
PIPELAY VESSEL			
Scale: 1:100	Sheet No: G547	Rev: A/AS9	Drawn: 1.1